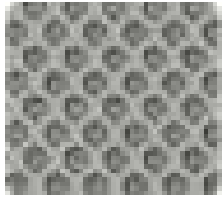


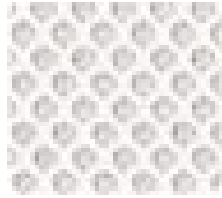
TAPIZADOS MALLA



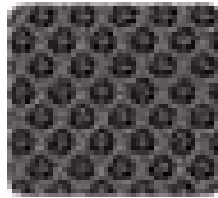
MODELOS MILA



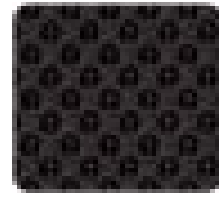
6011



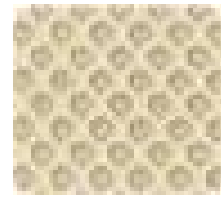
6061



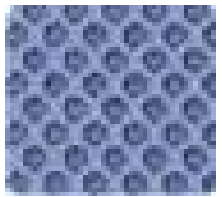
60025



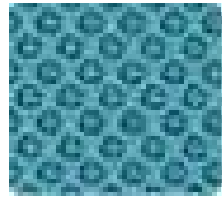
60099



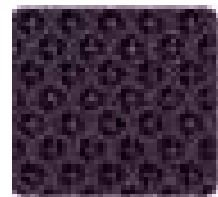
61128



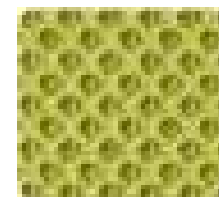
65078



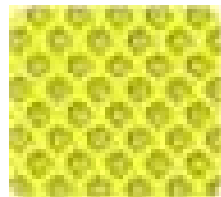
66083



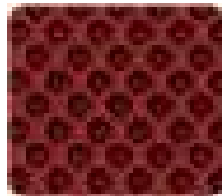
66064



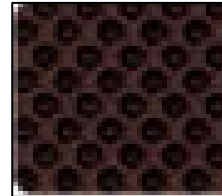
68056



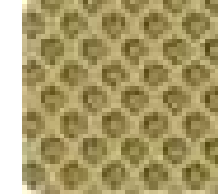
68137



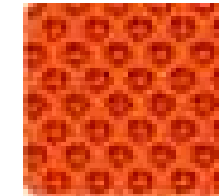
51129



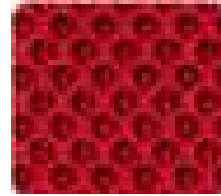
61130



62064



63034



64089

Especificaciones técnicas

Technical specifications

| | | |
|--|--|-------------------------------------|
| Composición | 100% Polyester 100% Poliéster | |
| Weight Peso | approx. aprox. grams lin. lin gramos. metre metro | 510 510 |
| Width Ancho | cm cm | 160 160 |
| Abrasion resistance Resistencia a la abrasión | 12947-2) | 70,000 70.000 |
| Pilling Pilling | 12945-2 | 5 5 |
| Colour fastness to light Solidez del color a la luz | Scale 1-8, max. Escala 1-8, máx. 8 - EN ISO 105-B02 8 - EN ISO 105-B02 | 5-7 5-7 |
| Colour fastness to rubbing Solidez del color al frotamiento | Scale 1-5, max.5 - EN ISO 105x12 (wet/dry) Escala 1-5, máx.5 - EN ISO 105x12 (seco / húmedo) | 4-5 4-5 |
| ACT Standards Ley de Normas | AATCC 16 Lightfastness AATCC 16 Solidez a la luz AATCC 8 or 116 wet/dry crocking AATCC 8 o 116 crocking húmedo / seco California Bulletin CAL 117-E-Class 1 Boletín de California CAL 117-E-Class 1 | Pass Pasa Pass Pasa Pass Pasa |
| Flammability Inflamabilidad | ASTM D4157-02 Wyz Abrasion ASTM D4157-02 Wyz abrasión ASTM D3511 Pilling ASTM D3511 Pilling BS EN 1021-2 Match BS EN 1021-2 del partido Calif. Bull. California Bull. 117E 117E BS EN 1021-1 Cigarette BS EN 1021-1 cigarrillo UNI 9175 Class 1 I EMME UNI 9175 Clase 1 | Pass Pasa Pass Pasa |
| Environment Medio ambiente | 100% free of heavy metals 100% libre de metales pesados | |
| Warranty Garantía | Oeko-Tex 100 certified Oeko-Tex 100 certificados 10 years warranty 10 años de garantía | |