

TAPIZADOS MALLA

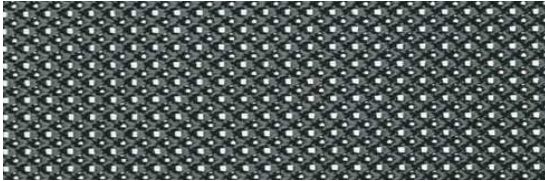


MODELOS

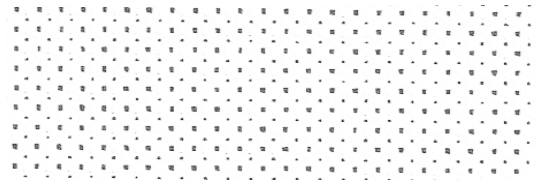
AKI

TOOL

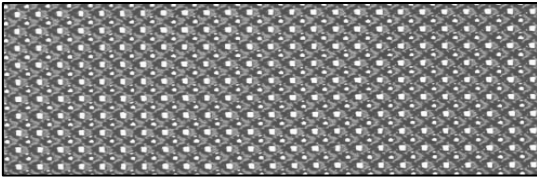
KRS



1669 negro/black



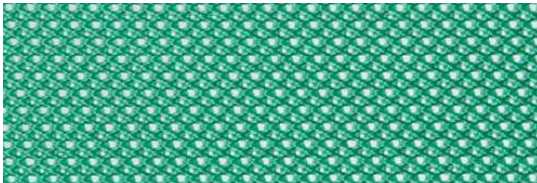
1667 blanco/white



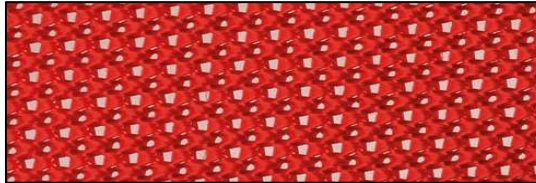
1719



1666



1671



1718



1668

Composición

Test de resistencia a la tracción (N/mm)

Resistencia a tensión (N)

Resistencia a la abrasión Martindale

Solidez a la luz

Resistencia a la humedad

Solidez al frote en seco

Solidez al frote en húmedo

Composition

Bursting Strength(Kg/5Cm2)

Tensile strength test (N/mm)

Tear strength test (N)

Martindale abrasion test

Color fastness to light test

Steam strength test (N)

Color fastness to crocking test (dry)

Color fastness to crocking test (wet)

100% nylon

L 36-W 22

L 103-W 185

Más de 25000 ciclos

20 AFU: 2,5

Urdimbre 938,48 - Trama 885,94

Grado 4-5

Grado 4

100% nylon

43

L 36-W 22

L 103-W 185

After 25000 cycles

20 AFU: 2,5

Warp 938,48 - Weft 885,94

After 10 cycles: grade 4-5

After 10 cycles: grade 4-5